

110 North Wacker Drive, Chicago, IL 60606
www.ggp.com

STREETS AT SOUTHPOINT, THE

6910 FAYETTEVILLE ROAD, SUITE 254
DURHAM, NORTH CAROLINA 27713-8247

TENANT NAMES SHOWN ON THIS PLAN REPRESENT LEASES WHICH ARE EXCLUDED, OUT FOR SIGNATURE, OR IN NEGOTIATION. SPECIFIC NAMES, LOCATIONS, DIMENSION OF ANY STORE, ENTRANCE, OR IMPROVEMENT ARE SUBJECT TO CHANGE, MODIFICATION AND DELETION BY LANDLORD OR OTHER PARTIES, AND ARE NOT A REPRESENTATION OF, OR WARRANTY AS TO THE OPENING OR CONTINUED OPERATION OF ANY STORE NAMED OR DEPICTED ON THIS PLAN.

NOTWITHSTANDING THAT CERTAIN OF THE ELEMENTS, INCLUDING BUT NOT LIMITED TO THE TENANT NAMES, SHOWN ON THIS PLAN MAY BE INDICATED AS FUTURE OR PROPOSED, LANDLORD MAKES NO REPRESENTATION THAT THE FUTURE DEVELOPMENT WILL OCCUR AS SHOWN.

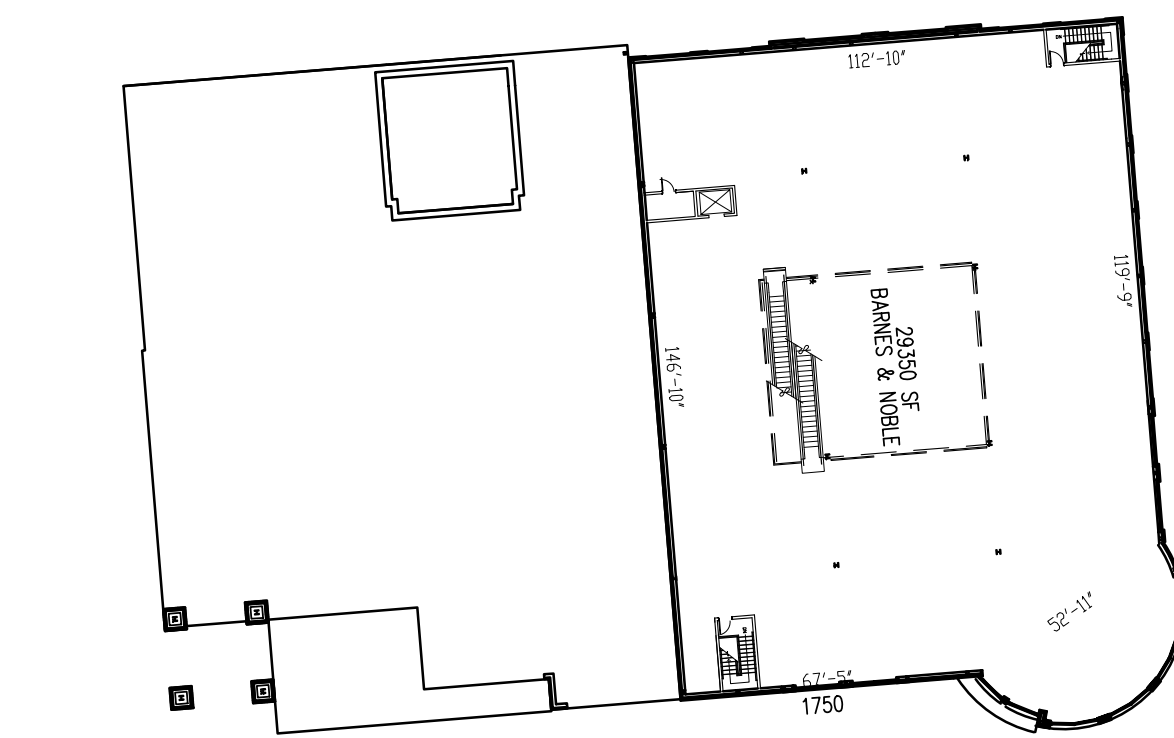
ALL TENANT LEASE AREAS ARE MEASURED FROM THE CENTERLINE OF INTERIOR PARTITION, FROM THE OUTSIDE FACE OF EXTERIOR WALL, FROM THE FULL THICKNESS OF CORRIDOR AND SHAFT WALLS AND FROM THE EDGE OF SLAB AT ANCHOR STORE WALLS.

PROJECT NO: 4244
DRAWN BY: TMK
COPYRIGHT:
General Growth Properties, Inc.

DESCRIPTION
LEASE PLAN
MAIN STREET

SHEET NO.
LP3

DATE: April 2016



BUILDING K - SECOND LEVEL

